

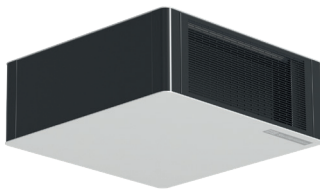


# Air disinfection for maximum protection against infection

## Air purification units - LTG UVC *SterilVentilation*



The LTG UVC *SterilVentilation* reliably and safely reduces the risk of infection to persons by aerosol-borne viruses such as Corona and flu. Ideally suited for all types of rooms.



**steril**  
ventilation

- **Maintenance-free continuous operation with maximum personal protection** due to verified UV-C shielding
- **Ozone- and chemical-free disinfection** of room air (patent pending)
- **Low-noise and effective room air flow** with proven LTG fan and flow technology up to 170 cfm
- **Effectiveness within seconds** due to High-performance UV-C low-pressure radiator
- Available as **free-standing, wall-mounted or ceiling-mounted unit**



virus and  
germ free



optimal room  
distribution



DIN 16798-1

low noise  
emissions



maintenance-free  
continuous operation



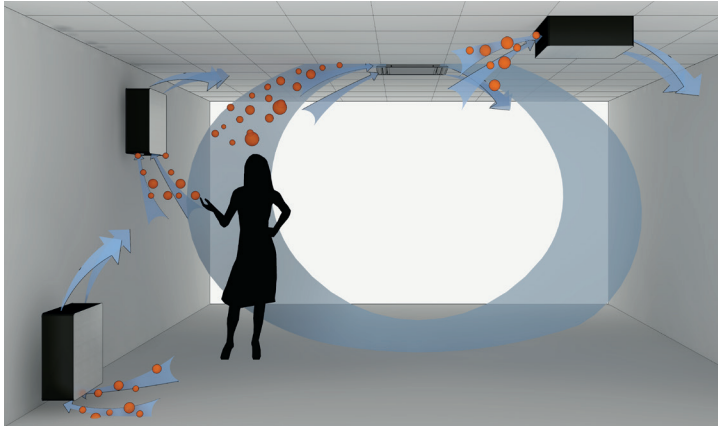
UV-C protection



German  
engineering

LTG Aktiengesellschaft, a pioneer in air and climate technology, is always one step ahead with trend-setting innovations for more than 95 years and has won the Innovation Award of the State of Baden-Wuerttemberg in 2017.

The risk of infection in rooms by viruses and bacteria increases if there is not a sufficient supply of fresh air. The use of air purification units such as the LTG UVC SterilVentilation significantly reduces the virus load in such cases. The high-performance UV-C low-pressure emitter built into the unit has been proven to inactivate up to 99.99 % of all germs and viruses. The proven LTG flow technology ensures quiet and effective room flushing.



Effective room flushing guarantees maximum inactivation of aerosol-bound viruses.

## Features

- Ozone and chemical free – invisible, natural, odorless radiation due to powerful UV-C low-pressure lamps
- Maintenance-free continuous operation - no need to change and dispose of a contaminated HEPA filter
- Easy to set up in all rooms as a plug-in floor, wall or ceiling unit
- Certified shielding of the UV-C emitter according to UL 507 & DIN EN ISO 15858 ensures safe continuous operation in the presence of people
- Multi-stage operation with silent mode selectable (depending on model)
- LED display for visual function monitoring
- Made in Germany - LTG proven, high-quality air technology and UV-C components

## Selection and application of UVC units

Based on the University of Aachen 2020 model and localized for either Canadian or US population with their infection rates from Jan 2020, this free software can be obtained from your local LTG Rep or from LTG Inc.

**Risk-Model RWTH AACHEN**

Project: **Project No. 1** Name: **Office** Date: **12-Feb-22**

**Design-Room**

Room height: **2.50 m**  
 Room Area: **27.5 m²**  
 Office Room: **18.0 m²**  
 Room Volume: **67.5 m³**

**US Reference Location**

Room Area: **27.5**  
 Room Volume: **67.5**  
 Room Height: **2.5**  
 Room Length: **5.2**  
 Room Width: **5.2**  
 Room Depth: **5.2**  
 Room Area: **27.5**  
 Room Volume: **67.5**  
 Room Height: **2.5**  
 Room Length: **5.2**  
 Room Width: **5.2**  
 Room Depth: **5.2**

**Infection Rate**

Based on current published population figures for the US, infection rates are calculated for the reference room as follows:

Infected people: **1.12**  
 Infected people: **1.12**  
 Infected people: **1.12**

**Steril Ventilation Unit**

UVC 400 Flow Rate: **170 cfm**  
 Efficiency: **99.99%**  
 Sound Power Level: **28 dB(A)**  
 UVC Source: **Low Pressure**  
 UVC Wavelength: **254 nm**

**Risk factor compared to reference room**

Room Area [m²]	Room Volume [m³]	Room Height [m]	Room Length [m]	Room Width [m]	Room Depth [m]	Risk Factor
10	25	2.5	3.2	3.2	3.2	0.1
15	38	2.5	4.8	4.8	4.8	0.2
20	50	2.5	6.4	6.4	6.4	0.3
25	63	2.5	8.0	8.0	8.0	0.4
30	75	2.5	9.6	9.6	9.6	0.5
35	88	2.5	11.2	11.2	11.2	0.6
40	100	2.5	12.8	12.8	12.8	0.7
45	113	2.5	14.4	14.4	14.4	0.8
50	125	2.5	16.0	16.0	16.0	0.9
55	138	2.5	17.6	17.6	17.6	1.0
60	150	2.5	19.2	19.2	19.2	1.1
65	163	2.5	20.8	20.8	20.8	1.2
70	175	2.5	22.4	22.4	22.4	1.3
75	188	2.5	24.0	24.0	24.0	1.4
80	200	2.5	25.6	25.6	25.6	1.5
85	213	2.5	27.2	27.2	27.2	1.6
90	225	2.5	28.8	28.8	28.8	1.7
95	238	2.5	30.4	30.4	30.4	1.8
100	250	2.5	32.0	32.0	32.0	1.9
105	263	2.5	33.6	33.6	33.6	2.0
110	275	2.5	35.2	35.2	35.2	2.1
115	288	2.5	36.8	36.8	36.8	2.2
120	300	2.5	38.4	38.4	38.4	2.3
125	313	2.5	40.0	40.0	40.0	2.4
130	325	2.5	41.6	41.6	41.6	2.5
135	338	2.5	43.2	43.2	43.2	2.6
140	350	2.5	44.8	44.8	44.8	2.7
145	363	2.5	46.4	46.4	46.4	2.8
150	375	2.5	48.0	48.0	48.0	2.9
155	388	2.5	49.6	49.6	49.6	3.0
160	400	2.5	51.2	51.2	51.2	3.1
165	413	2.5	52.8	52.8	52.8	3.2
170	425	2.5	54.4	54.4	54.4	3.3
175	438	2.5	56.0	56.0	56.0	3.4
180	450	2.5	57.6	57.6	57.6	3.5
185	463	2.5	59.2	59.2	59.2	3.6
190	475	2.5	60.8	60.8	60.8	3.7
195	488	2.5	62.4	62.4	62.4	3.8
200	500	2.5	64.0	64.0	64.0	3.9
205	513	2.5	65.6	65.6	65.6	4.0
210	525	2.5	67.2	67.2	67.2	4.1
215	538	2.5	68.8	68.8	68.8	4.2
220	550	2.5	70.4	70.4	70.4	4.3
225	563	2.5	72.0	72.0	72.0	4.4
230	575	2.5	73.6	73.6	73.6	4.5
235	588	2.5	75.2	75.2	75.2	4.6
240	600	2.5	76.8	76.8	76.8	4.7
245	613	2.5	78.4	78.4	78.4	4.8
250	625	2.5	80.0	80.0	80.0	4.9
255	638	2.5	81.6	81.6	81.6	5.0
260	650	2.5	83.2	83.2	83.2	5.1
265	663	2.5	84.8	84.8	84.8	5.2
270	675	2.5	86.4	86.4	86.4	5.3
275	688	2.5	88.0	88.0	88.0	5.4
280	700	2.5	89.6	89.6	89.6	5.5
285	713	2.5	91.2	91.2	91.2	5.6
290	725	2.5	92.8	92.8	92.8	5.7
295	738	2.5	94.4	94.4	94.4	5.8
300	750	2.5	96.0	96.0	96.0	5.9
305	763	2.5	97.6	97.6	97.6	6.0
310	775	2.5	99.2	99.2	99.2	6.1
315	788	2.5	100.8	100.8	100.8	6.2
320	800	2.5	102.4	102.4	102.4	6.3
325	813	2.5	104.0	104.0	104.0	6.4
330	825	2.5	105.6	105.6	105.6	6.5
335	838	2.5	107.2	107.2	107.2	6.6
340	850	2.5	108.8	108.8	108.8	6.7
345	863	2.5	110.4	110.4	110.4	6.8
350	875	2.5	112.0	112.0	112.0	6.9
355	888	2.5	113.6	113.6	113.6	7.0
360	900	2.5	115.2	115.2	115.2	7.1
365	913	2.5	116.8	116.8	116.8	7.2
370	925	2.5	118.4	118.4	118.4	7.3
375	938	2.5	120.0	120.0	120.0	7.4
380	950	2.5	121.6	121.6	121.6	7.5
385	963	2.5	123.2	123.2	123.2	7.6
390	975	2.5	124.8	124.8	124.8	7.7
395	988	2.5	126.4	126.4	126.4	7.8
400	1000	2.5	128.0	128.0	128.0	7.9
405	1013	2.5	129.6	129.6	129.6	8.0
410	1025	2.5	131.2	131.2	131.2	8.1
415	1038	2.5	132.8	132.8	132.8	8.2
420	1050	2.5	134.4	134.4	134.4	8.3
425	1063	2.5	136.0	136.0	136.0	8.4
430	1075	2.5	137.6	137.6	137.6	8.5
435	1088	2.5	139.2	139.2	139.2	8.6
440	1100	2.5	140.8	140.8	140.8	8.7
445	1113	2.5	142.4	142.4	142.4	8.8
450	1125	2.5	144.0	144.0	144.0	8.9
455	1138	2.5	145.6	145.6	145.6	9.0
460	1150	2.5	147.2	147.2	147.2	9.1
465	1163	2.5	148.8	148.8	148.8	9.2
470	1175	2.5	150.4	150.4	150.4	9.3
475	1188	2.5	152.0	152.0	152.0	9.4
480	1200	2.5	153.6	153.6	153.6	9.5
485	1213	2.5	155.2	155.2	155.2	9.6
490	1225	2.5	156.8	156.8	156.8	9.7
495	1238	2.5	158.4	158.4	158.4	9.8
500	1250	2.5	160.0	160.0	160.0	9.9
505	1263	2.5	161.6	161.6	161.6	10.0
510	1275	2.5	163.2	163.2	163.2	10.1
515	1288	2.5	164.8	164.8	164.8	10.2
520	1300	2.5	166.4	166.4	166.4	10.3
525	1313	2.5	168.0	168.0	168.0	10.4
530	1325	2.5	169.6	169.6	169.6	10.5
535	1338	2.5	171.2	171.2	171.2	10.6
540	1350	2.5	172.8	172.8	172.8	10.7
545	1363	2.5	174.4	174.4	174.4	10.8
550	1375	2.5	176.0	176.0	176.0	10.9
555	1388	2.5	177.6	177.6	177.6	11.0
560	1400	2.5	179.2	179.2	179.2	11.1
565	1413	2.5	180.8	180.8	180.8	11.2
570	1425	2.5	182.4	182.4	182.4	11.3
575	1438	2.5	184.0	184.0	184.0	11.4
580	1450	2.5	185.6	185.6	185.6	11.5
585	1463	2.5	187.2	187.2	187.2	11.6
590	1475	2.5	188.8	188.8	188.8	11.7
595	1488	2.5	190.4	190.4	190.4	11.8
600	1500	2.5	192.0	192.0	192.0	11.9
605	1513	2.5	193.6	193.6	193.6	12.0
610	1525	2.5	195.2	195.2	195.2	12.1
615	1538	2.5	196.8	196.8	196.8	12.2
620	1550	2.5	198.4	198.4	198.4	12.3
625	1563	2.5	200.0	200.0	200.0	12.4
630	1575	2.5	201.6	201.6	201.6	12.5
635	1588	2.5	203.2	203.2	203.2	12.6
640	1600	2.5	204.8	204.8	204.8	12.7
645	1613	2.5	206.4	206.4	206.4	12.8
650	1625	2.5	208.0	208.0	208.0	12.9
655	1638	2.5	209.6	209.6	209.6	13.0
660	1650	2.5	211.2	211.2	211.2	13.1
665	1663	2.5	212.8	212.8	212.8	13.2
670	1675	2.5	214.4	214.4	214.4	13.3
675	1688	2.5	216.0	216.0	216.0	13.4
680	1700	2.5	217.6	217.6	217.6	13.5
685	1713	2.5	219.2	219.2	219.2	13.6
690	1725	2.5	220.8	220.8	220.8	13.7
695	1738	2.5	222.4	222.4	222.4	13.8
700	1750	2.5	224.0	224.0	224.0	13.9
705	1763	2.5	225.6	225.6	225.6	14.0
710	1775	2.5	227.2	227.2	227.2	14.1
715	1788	2.5	228.8	228.8	228.8	14.2
720	1800	2.5	230.4	230.4	230.4	14.3
725	1813	2.5	232.0	232.0	232.0	14.4
730	1825	2.5	233.6	233.6		